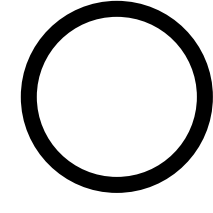
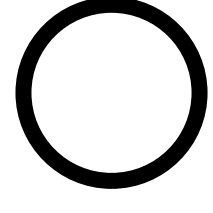


Aşağıda verilen cümleleri okuyalım. Resimlerin kutucuğunda yazan sayıları, cümlelerin kutularına yazalım.

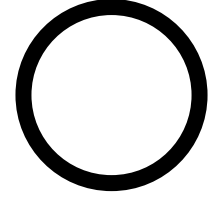
1



Kamil limonlu keke unu ele.

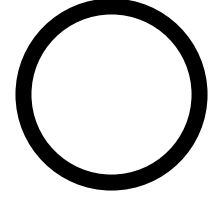


Kemal kokulu mumu eline al.

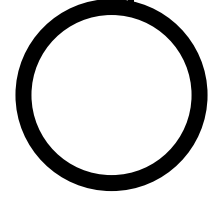


Emel onlu lokumu ailene al.

2

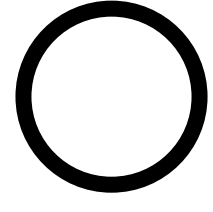


Numan o okula konuk mu?

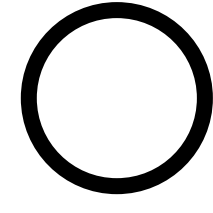


Melike ninene onu oku.

3

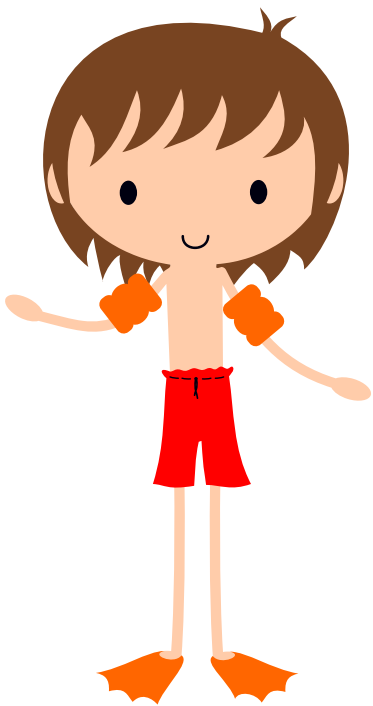


Emin koluna kolluk al.



Minel o mekan kuleli mi?

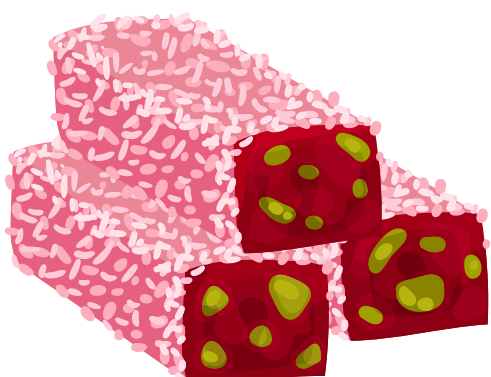
4



6



5



7

