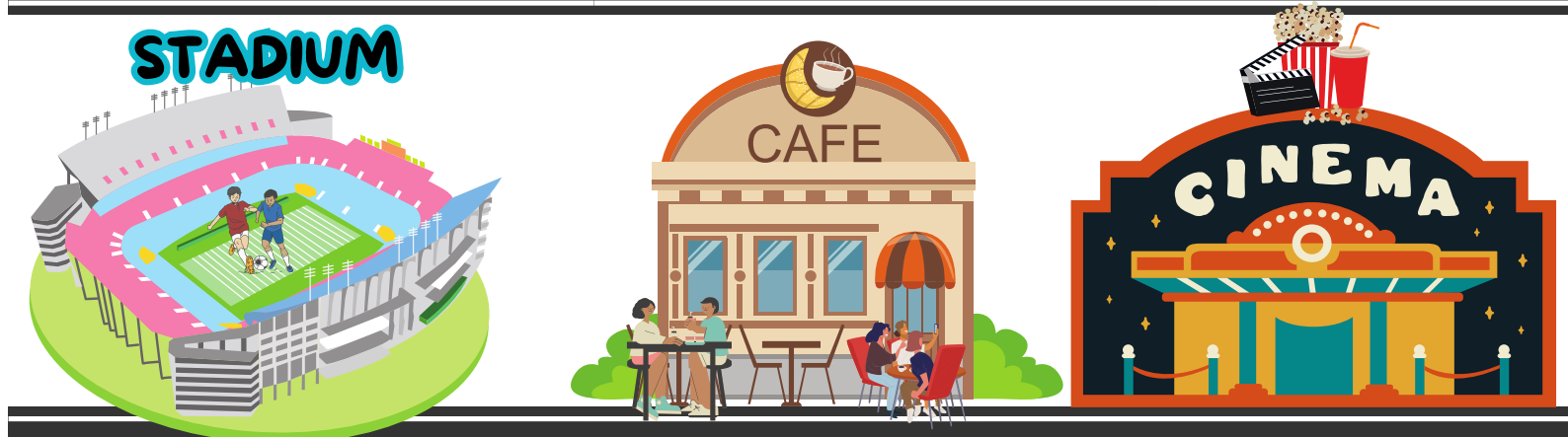
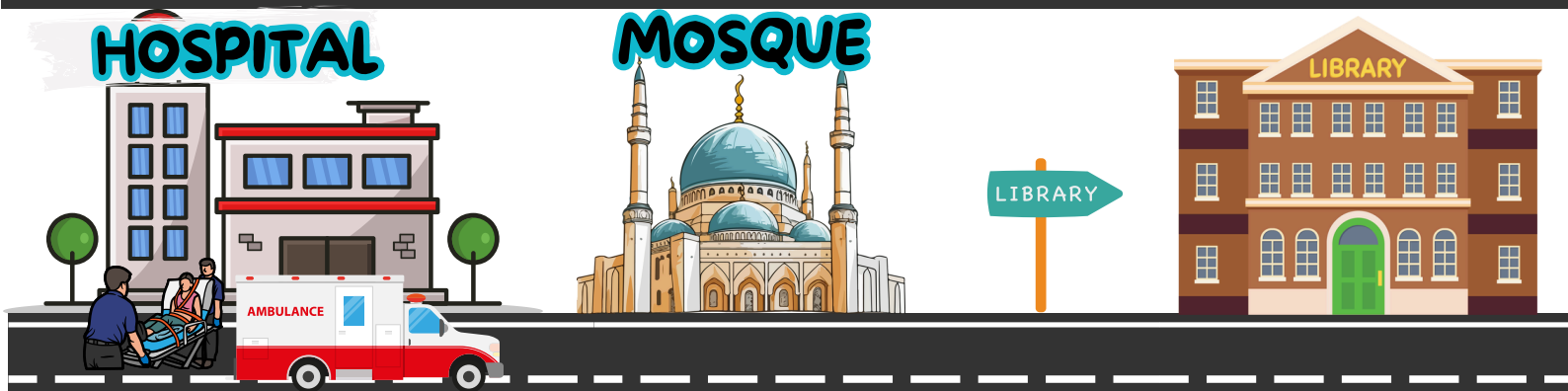


# IN MY CITY



# PLACES

- bank → banka  
city → şehir  
town → kasaba  
village → köy  
hospital → hastane  
library → kütüphane  
mosque → cami  
museum → müze  
school → okul  
shopping center → alışveriş merkezi  
zoo → hayvanat bahçesi  
cafe → kafe  
market → market  
stadium → stadyum  
cinema → sinema  
restaurant → restoran



# IMPORTANT PHRASES

- I'm sorry → üzgünüm  
I don't know → bilmiyorum  
Sorry about that → kusura bakmayın  
I'm so sorry → çok üzgünüm  
over here → burada  
over there → orada  
where → nerede

Where is the museum?  
(müze nerede?)

I'm sorry. I don't know.  
(üzgünüm bilmiyorum)



LET'S  
LEARN

Where is the hospital?  
(hastane nerede)

Over there.  
(orada)

Over here.  
(burada.)

Where is the shopping center?  
(alışveriş merkezi nerede?)



# Let's Match

1. Cinema

3. Museum

5. Library

7. Shopping Center

9. Library

2. Hospital

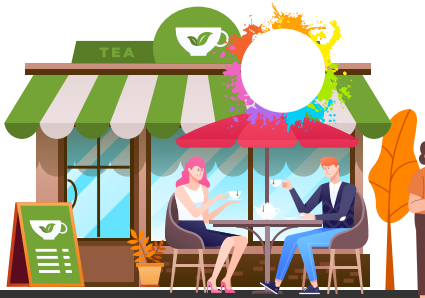
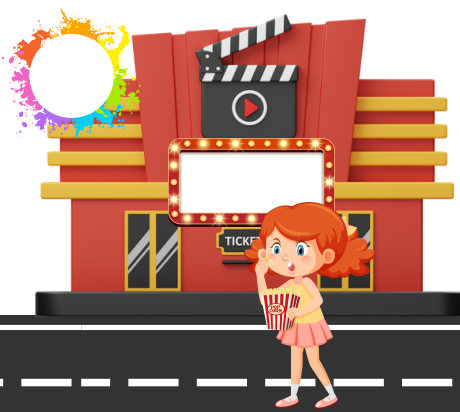
4. School

6. Zoo

8. Market

11. Bank

10. Stadium



## Where ...? / at / in

★ Bir kişinin veya nesnenin nerede olduğunu sormak için "Where ...?" soru kalıbını kullanırız.

★ **at:** Okul, hastane, müze gibi belirli yerlerde kullanılır.  
★ **in:** Şehir, kasaba, köy gibi geniş alanlar için kullanılır.

★ Where is the mosque? (Cami nerede?) → It is in the town. (Kasabada.)  
★ Where are you now? (Şu an neredesin?) → I'm at the library. (Kütüphanedeyim.)

★ Where is the school? (Okul nerede?) → It is in the city. (Şehirde.)  
★ Where is the shopping center? (Alışveriş merkezi nerede?) → It is in the village. (Köyde.)

★ Where is Maria now? (Maria nerede?) → She is at the restaurant. (O restoranda.)  
★ Where are the children? (Çocuklar nerede?) → They are at the zoo. (Onlar hayvanat bahçesinde.)

★ Where is the bank? (Banka nerede?) → It is in the market. (Markette.)  
★ Where are we? (Biz neredeyiz?) → We are at the stadium. (Stadyumdayız.)

★ Where is your friend? (Arkadaşın nerede?) → He is in Istanbul. (O, İstanbul'da.)  
★ Where is my book? (Kitabım nerede?) → It is over there, at the cafe. (Şurada, kafede.)



Where is Mike?

He is at the hospital.

Where is Suzy?

She is at the cafe.

Where is Emma?

She is at the library.





**Jake**

**Mike**

**Nil**



**Mine**



over

Cafe

I'm sorry.

town

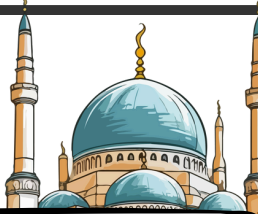
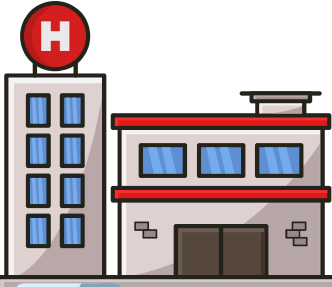


Where are you now?

I'm at the \_\_\_\_\_

It is \_\_\_\_\_ there.

Where is the hospital?



\_\_\_\_\_, I don't know.

Where is the market?



Emma

Where is Emma?

She is in the \_\_\_\_.



**Tick the correct one.**

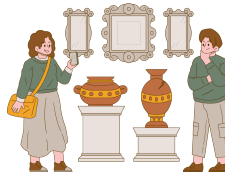


**1 Where is Nina?**



- At the library
- At the cafe
- At the hospital

**2 Where are they?**



- At the school.
- At the museum.
- In Paris

**3 Where is Elif?**



- At the zoo.
- At the market.
- At the cinema.

**4 Where is Jack?**



- At the cinema.
- At the stadium.
- At the mosque.

**5 Where are the kids?**



- At the shopping center.
- At the zoo.
- At the cinema.

**6 Where is Betty?**



- At the hospital
- At the stadium.
- At the shopping center.