

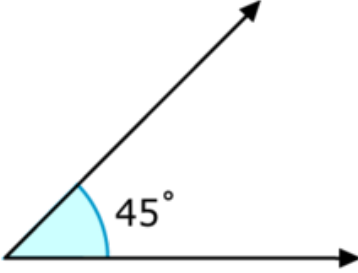


Adı Soyadı :

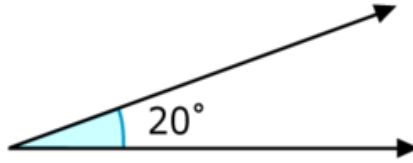
Numarası :

Konu: Açları Standart Ölçme Araçları İle Ölçme (Açı Çeşitleri)

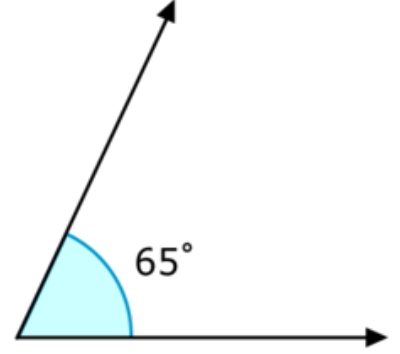
Aşağıdaki açları dar, dik, doğru ve geniş açı olarak sınıflandıralım.



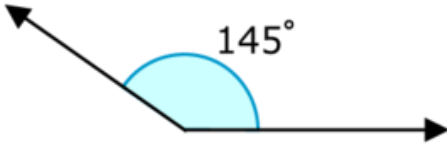
.....



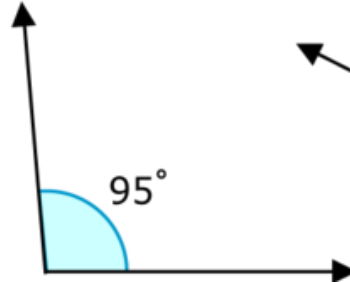
.....



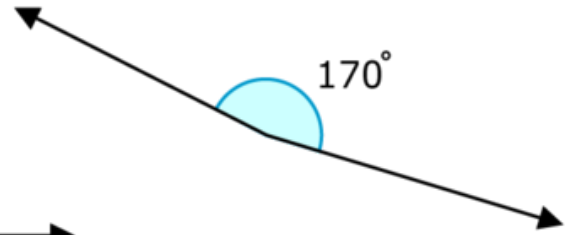
.....



.....



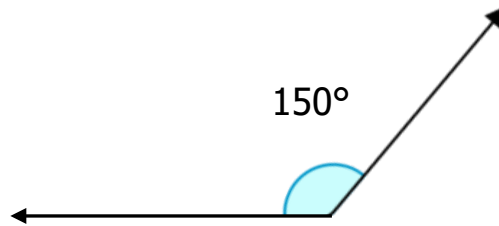
.....



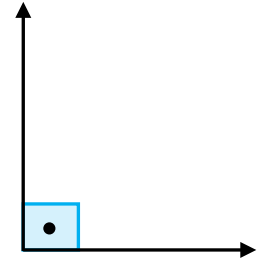
.....



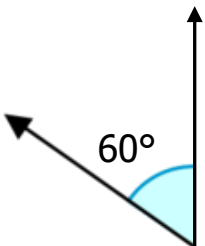
.....



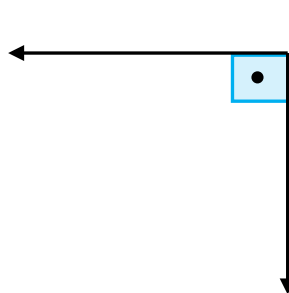
.....



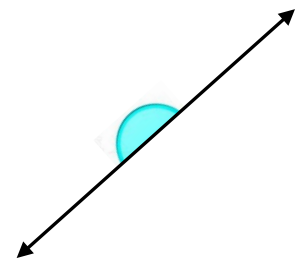
.....



.....

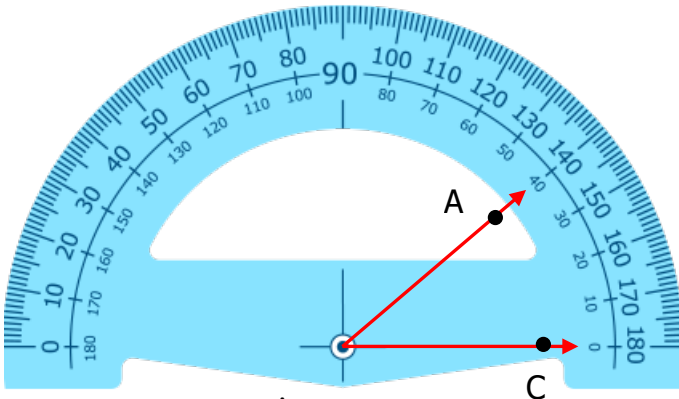


.....

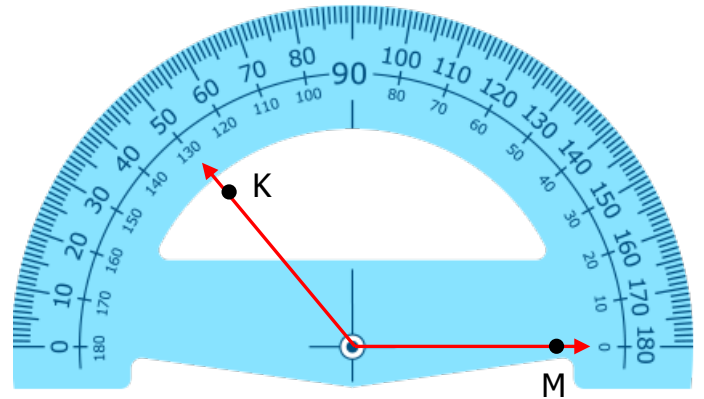


.....

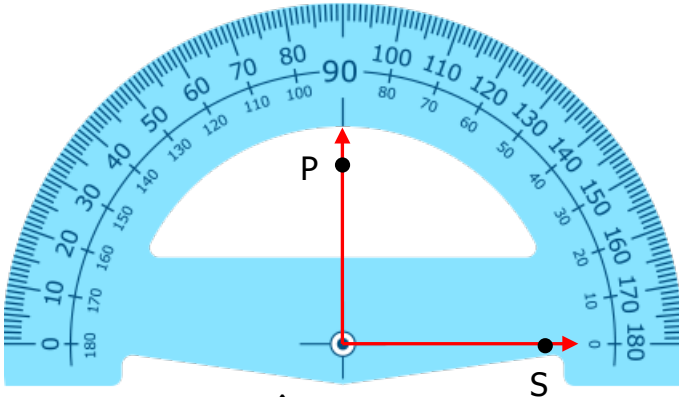
Aşağıdaki açıölçeri (iletki) ile ölçülen açların kaç derece olduğunu altlarına yazınız.



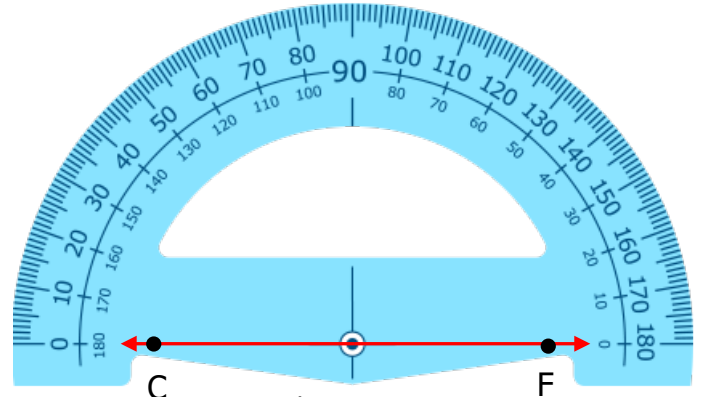
$\hat{S}(B) = \dots\dots\dots$



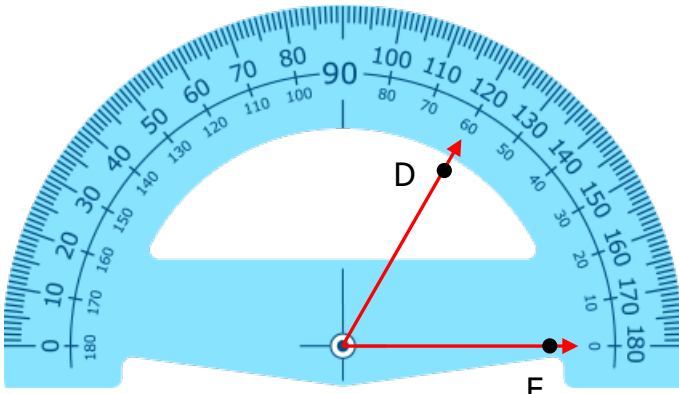
$\hat{S}(L) = \dots\dots\dots$



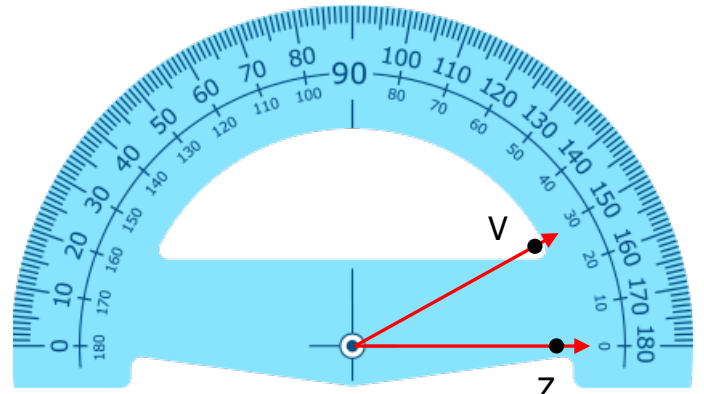
$\hat{S}(R) = \dots\dots\dots$



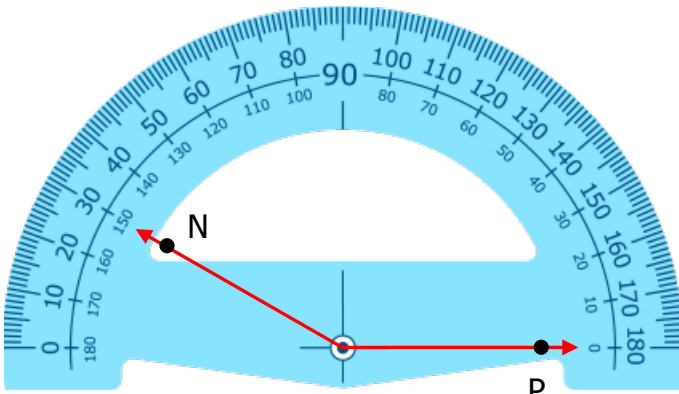
$\hat{S}(D) = \dots\dots\dots$



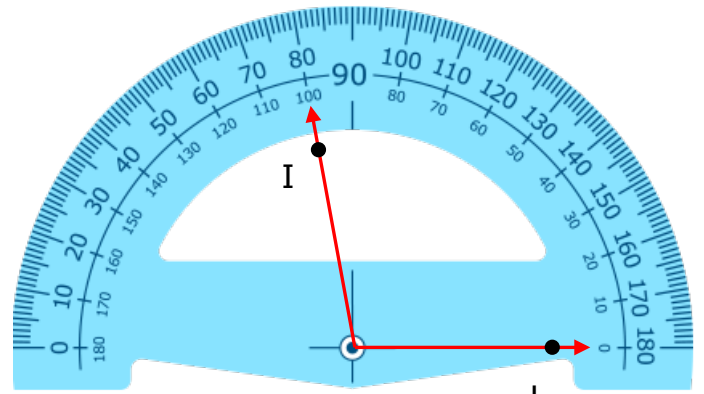
$\hat{S}(E) = \dots\dots\dots$



$\hat{S}(Y) = \dots\dots\dots$



$\hat{S}(O) = \dots\dots\dots$

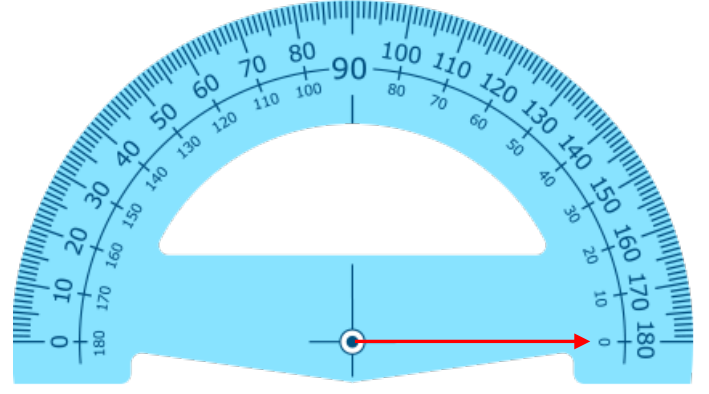


$\hat{S}(H) = \dots\dots\dots$

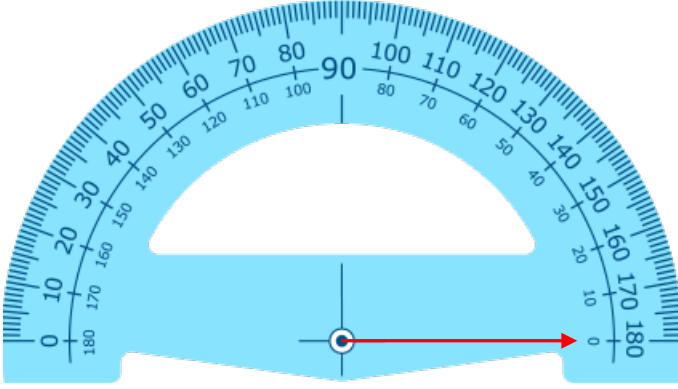
Aşağıdaki açölçer (iletki) ile istenilen ölçülere uygun açılar çizelim.



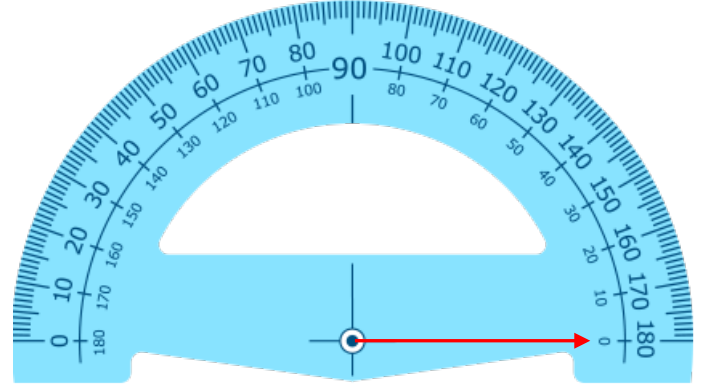
$$\hat{S}(A) = 70^\circ$$



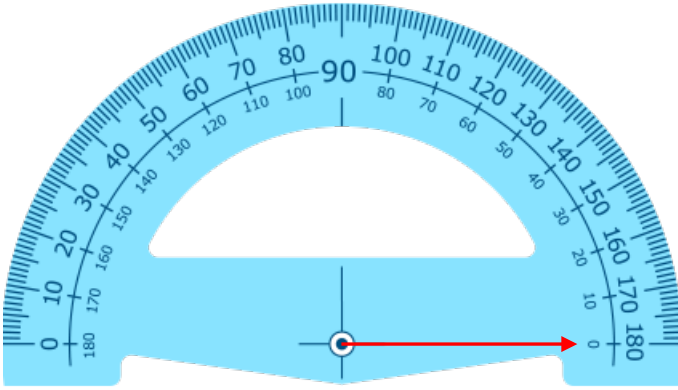
$$\hat{S}(B) = 160^\circ$$



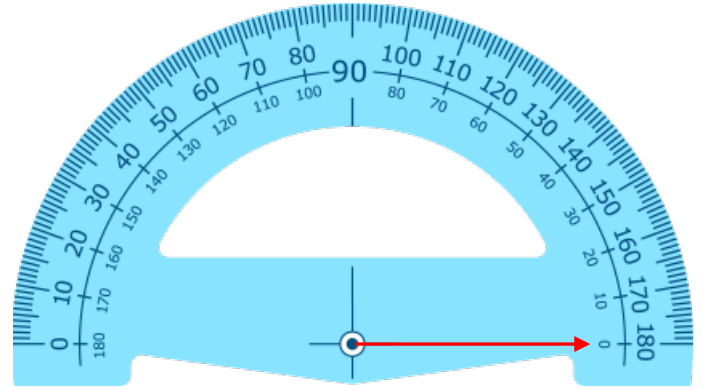
$$\hat{S}(C) = 20^\circ$$



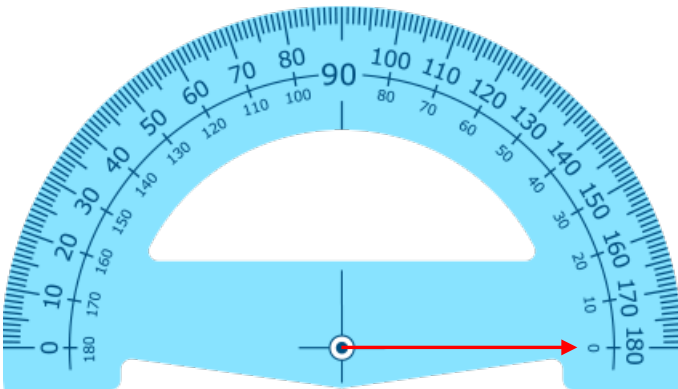
$$\hat{S}(D) = 120^\circ$$



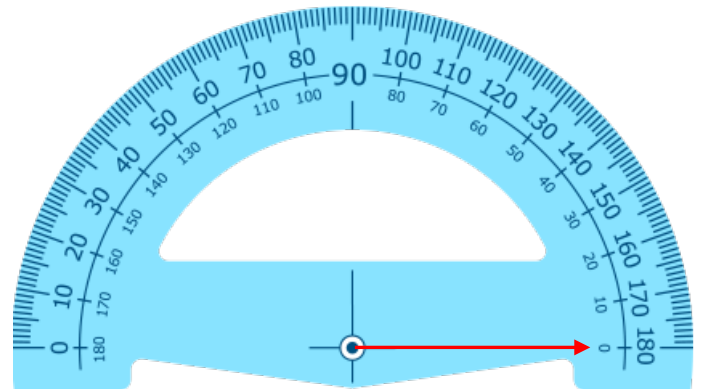
$$\hat{S}(E) = 170^\circ$$



$$\hat{S}(F) = 50^\circ$$



$$\hat{S}(G) = 90^\circ$$



$$\hat{S}(H) = 180^\circ$$