

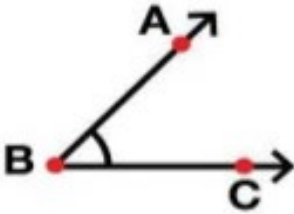


Adı Soyadı :

Numarası :

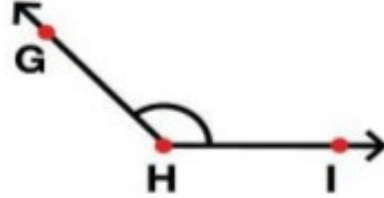
Konu: Açılar (Ölçüsü Verilen Açığı Çizme)

Aşağıdaki açıları açıölçer (iletke) ile ölçünüz. Ölçüm sonucunu ve açı çeşidini örnekteki gibi yazınız.



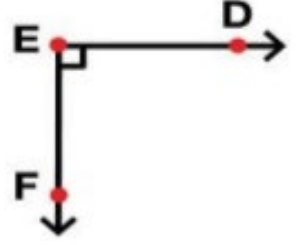
$$S(\hat{B}) = 45^\circ$$

Dar açı



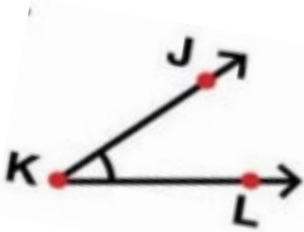
$$S(\hat{H}) = \dots$$

..... açı



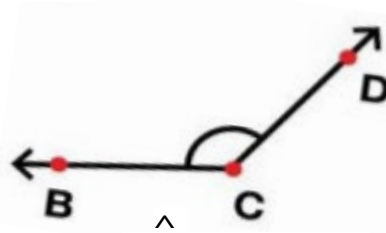
$$S(\hat{E}) = \dots$$

..... açı



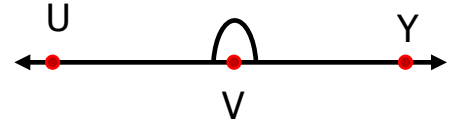
$$S(\hat{K}) = \dots$$

..... açı



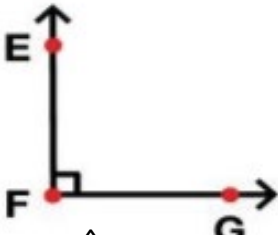
$$S(\hat{C}) = \dots$$

..... açı



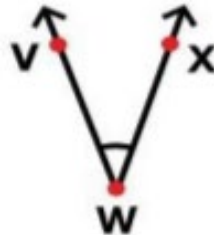
$$S(\hat{V}) = \dots$$

..... açı



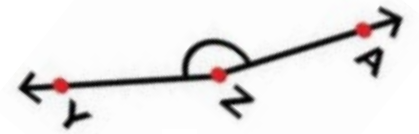
$$S(\hat{F}) = \dots$$

..... açı



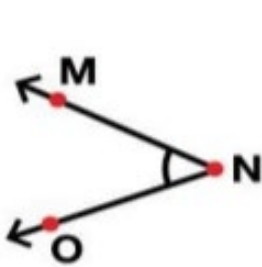
$$S(\hat{W}) = \dots$$

..... açı



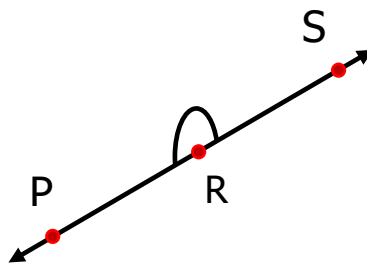
$$S(\hat{Z}) = \dots$$

..... açı



$$S(\hat{O}) = \dots$$

..... açı



$$S(\hat{R}) = \dots$$

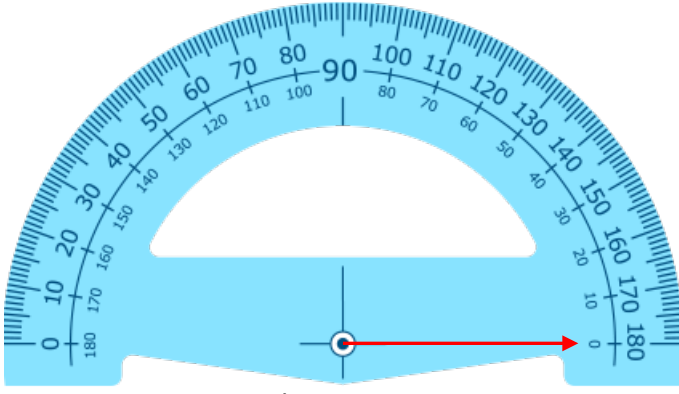
..... açı



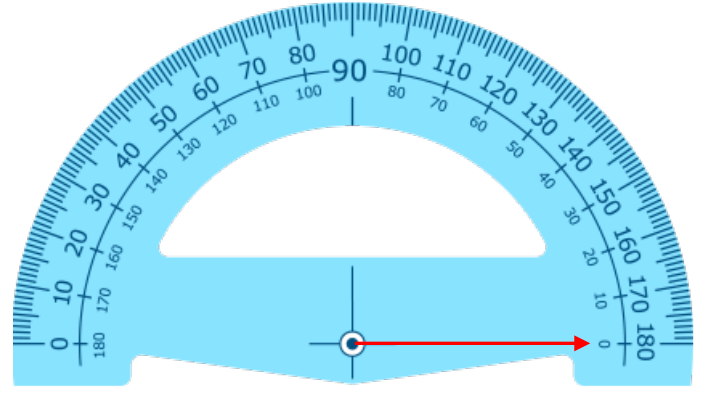
$$S(\hat{O}) = \dots$$

..... açı

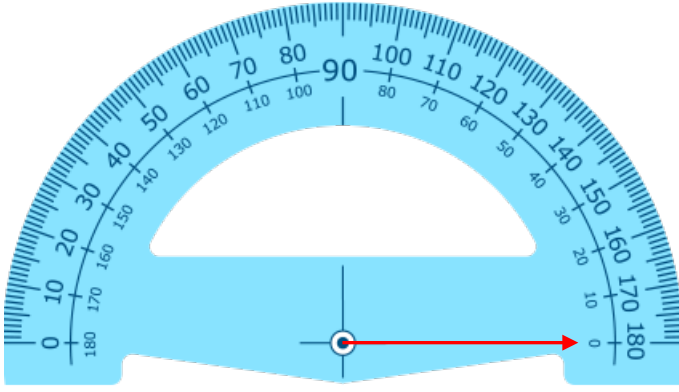
Aşağıdaki açölçer (iletki) ile istenilen ölçülere uygun açılar çizelim.



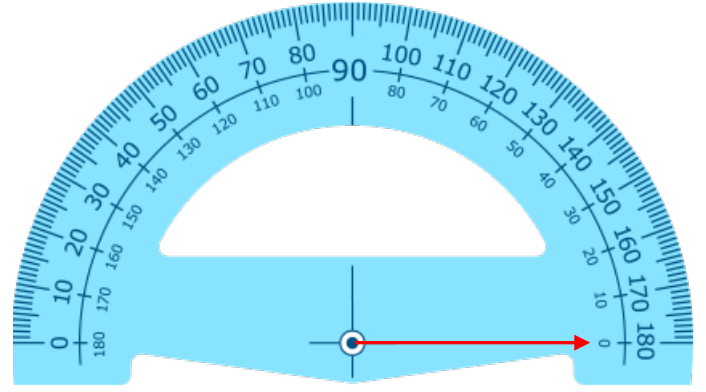
$$S(\hat{H}) = 80^\circ$$



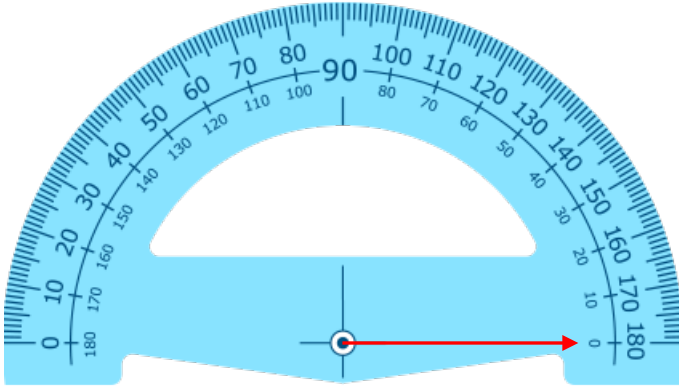
$$S(\hat{L}) = 110^\circ$$



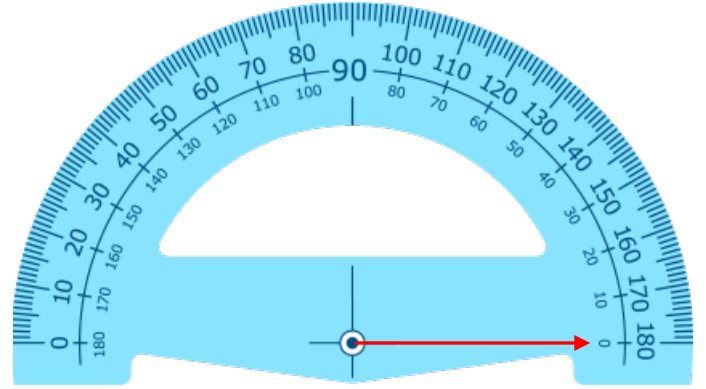
$$S(\hat{M}) = 130^\circ$$



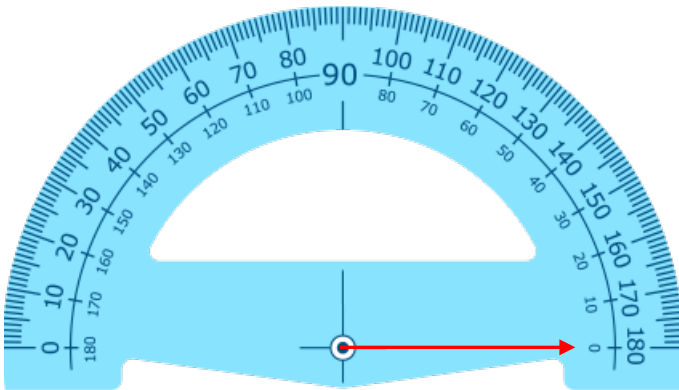
$$S(\hat{N}) = 90^\circ$$



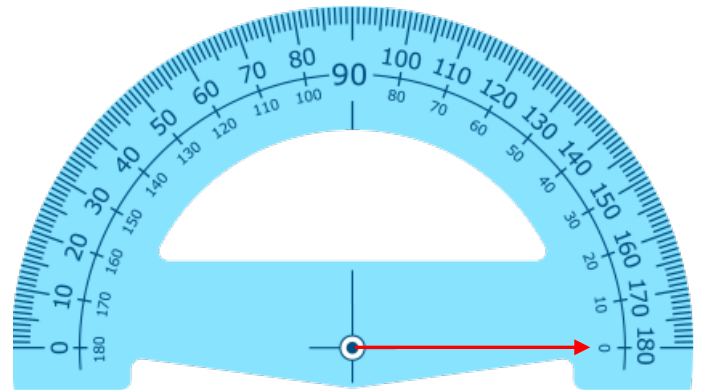
$$S(\hat{O}) = 180^\circ$$



$$S(\hat{P}) = 50^\circ$$

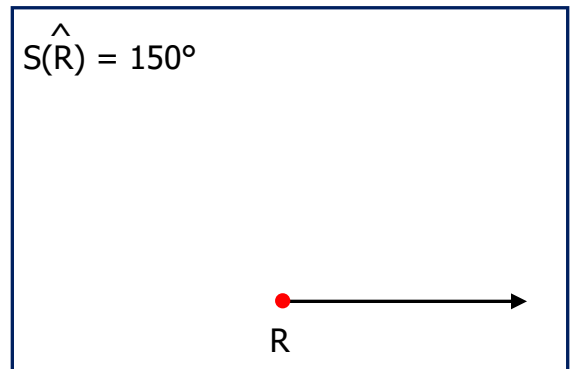
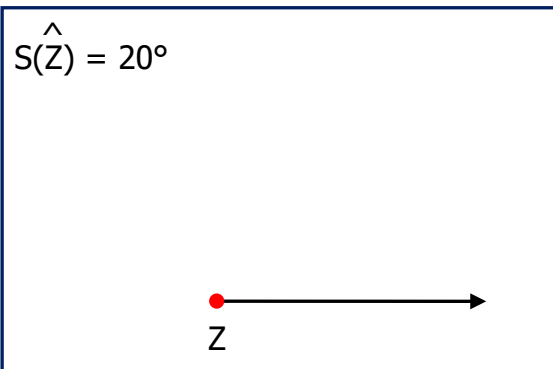
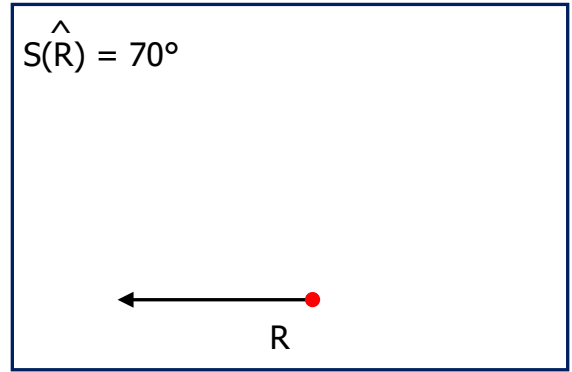
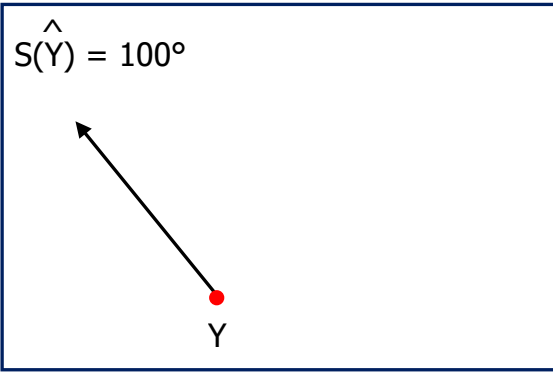
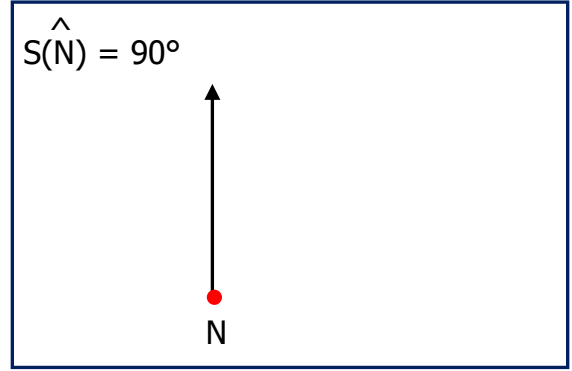
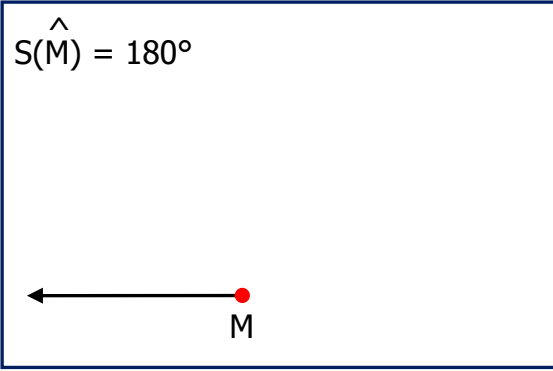
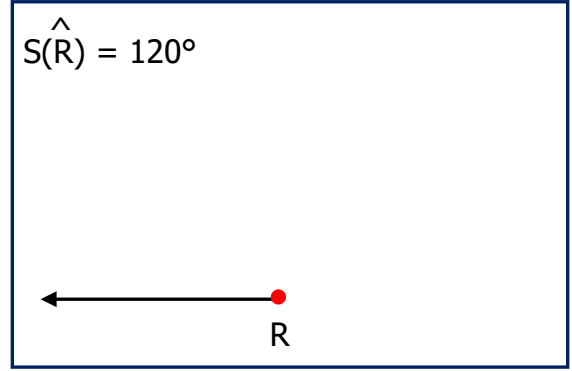
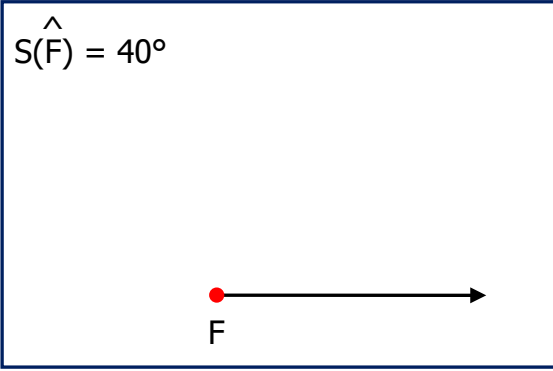


$$S(\hat{R}) = 40^\circ$$

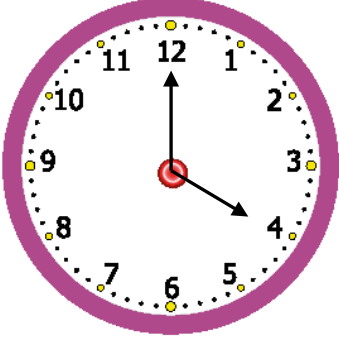


$$S(\hat{S}) = 160^\circ$$

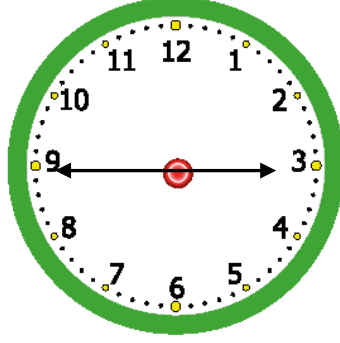
Aşağıdaki ışınlardan yararlanarak ölçüsü verilen açılarını çizin.



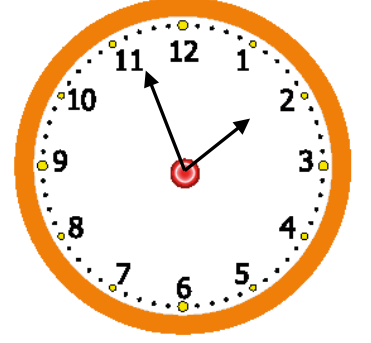
Aşağıdaki saatlerde akrep ve yelkovan arasında oluşan açıların çeşitlerini yazınız.



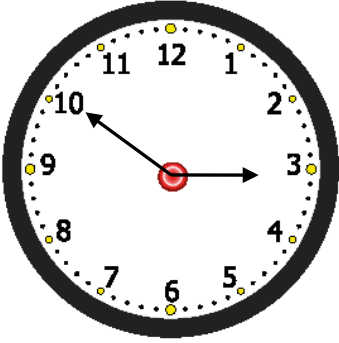
..... açı



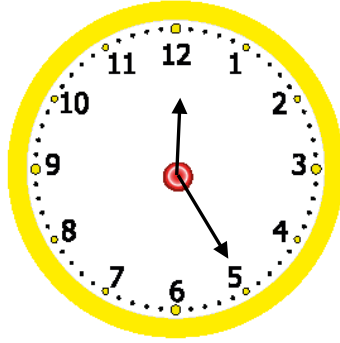
..... açı



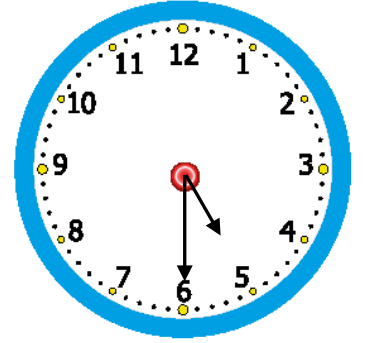
..... açı



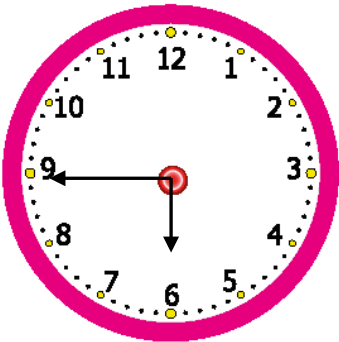
..... açı



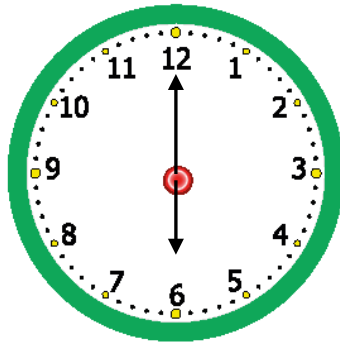
..... açı



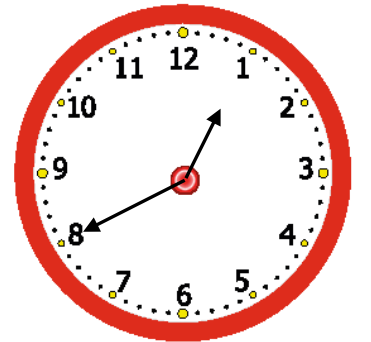
..... açı



..... açı



..... açı



..... açı